

G2_® Panic

New high quality Gatton panic type

G2 is a new Panic variety which provides an abundance of bulky, lush feed, ideal for high quality, high production enterprises. It is well suited to a wide variety of situations and environments.

Scientific Name

Megathyrsus maximus

Plant Characteristics

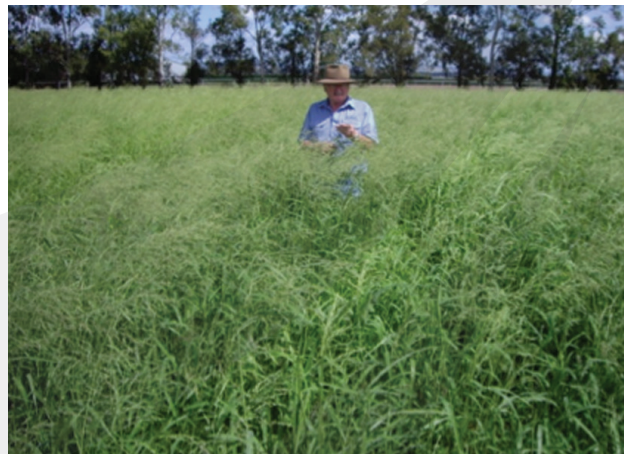
- Selected for an abundance of bulky, soft leaves.
- Hardy and robust, whilst still also being soft and very palatable, maintaining feed quality.
- Good frost tolerance.
- Good drought tolerance – has a deep, dense fibrous root system.
- Large, aggressive crown.
- Good shade tolerance.
- Good fit into rotational grazing systems.
- Flexible enough to be used for either grazing or as opportune hay production.
- Excellent cold tolerance at all growth stages – has very good ‘bounce back’ following winter.
- Complements Leucaena very well.

Area of Adaption

- Suited to tropical, sub-tropical and some temperate regions of Australia.
- Performs best where minimum rainfall is 500mm per annum or where irrigation can be applied.

Maturity

G2 Panic is a later maturing variety.



Soil Type

Is adapted to a wide range of soil types. Performs best on well drained soils.

Sowing

G2 Panic should be planted at 1-4 kg/ha for bare seed or 8-12 kg/ha for coated. Increase the seeding rate for irrigated pastures.